

Contribution of renewable energy consumption to CO₂ emissions mitigation: a comparative analysis from the income levels' perspective in the belt and road initiative (BRI) region

Junsong Jia and Yueyue Rong
Jiangxi Normal University, Nanchang, China

Chundi Chen
Tongji University, Shanghai, China

Dongming Xie
Jiangxi Science and Technology Normal University, Nanchang, China, and

Yong Yang
Jiangxi Normal University, Nanchang, China

Abstract

Purpose – This paper aims to retrospectively quantify the contribution of renewable energy consumption (REC) to mitigate the carbon dioxide (CO₂) emissions for the belt and road initiative (BRI) region. The reason is that, so far, still few scientists have deeply analyzed this underlying impact, especially from the income levels' perspective.

Design/methodology/approach – The study divides the BRI region into four groups by the income levels (high, HI; upper middle, UM; lower middle, LM; lower, LO) during 1992–2014 and uses the logarithmic mean Divisia index.

Findings – The results show the REC of the BRI has an overall decreasing trend but the driving contribution to the CO₂ growth except that the HI group's REC has an obviously mitigating contribution of –2.09%. The number indicates that it is necessary and urgent to exploit and use renewable energy, especially in mid- and low-income countries due to the large potential of carbon mitigation. Besides, during 2010–2014, the energy intensity effects of different groups were negative except for the low income group (positive, 5.47 million tonnes), which showed that some poor countries recently reduced CO₂ emissions only by extensively using renewable energy but not enhancing the corresponding efficiency. Conversely, in other rich countries, people paid more attention to improve the energy-use efficiency to lower energy intensity.



Originality/value – This study creatively analyzes this underlying impact of the REC to mitigate the CO₂ emissions from the income levels' perspective and proposes some reasonable countermeasures of reducing CO₂ for the BRI region.

Keywords Contribution, Income levels, Belt and road initiative (BRI) region, CO₂ emissions mitigation, Renewable energy consumption (REC)

Paper type Research paper

1. Introduction

With the population growth and economic development, global energy consumption and related carbon dioxide (CO₂) have sharply increased, as the industrial revolution (Armstrong *et al.*, 2016; Barack, 2017). This fact might cause some extreme environmental problems such as climate warming and attracted more and more attention (Martinez-Zarzoso and Maruotti, 2011; Tian *et al.*, 2018; Bilan *et al.*, 2019). Thus, it is important and urgent to study the mechanism of CO₂ mitigation and the transition of energy consumption (Menyah and Wolde-Rufael, 2010; Teixeira *et al.*, 2019; Aydogan and Vardar, 2019). For example, some scientists noticed that the growth of renewable energy consumption (REC) could, to some extent, achieve the goal of reducing carbon emissions (Timilsina *et al.*, 2011; Bhattacharya *et al.*, 2017; Yao *et al.*, 2019). More representatively-related achievements were listed in Table 1.

Notes: USA, MENA and OECD are the United States of America, Middle Eastern and Northern Africa, Organization for Economic Cooperation and Development, respectively. PCM, ARDL, PVAR, FMOLS, PVECM and SAM are the methods of panel cointegration model (PCM), auto regressive distributed lag (ARDL), panel vector autoregression (PVAR), fully modified ordinary least square (FMOLS), panel vector error correction model (PVECM), scenario analysis model (SAM), respectively. “A B” means A is the granger reason of B and vice versa.

In Table 1, most studies concluded that the increasing REC could reduce regional carbon emissions (Apergis and Payne, 2015; Long *et al.*, 2015; Hanif, 2018). However, some others thought that the nexus between the REC and CO₂ emission was not obvious (Cherni and Jouini, 2017; Zaghoudi, 2017; Emir *et al.*, 2019). There are even a few studies that found that the REC's growth could cause the increase of CO₂ emission and vice versa (Lu, 2017; Zrelli, 2017; Ben Jebli, 2019). Then, except for Dong *et al.* (2018a, 2018b, 2020), almost all researchers chose one/some specific countries or regions as cases to study this nexus between the REC and CO₂ emissions. For example, Ito (2016), Lu (2017), Pata (2018) and Lee (2019) chose 31 developed countries, Asian, Turkey and European Union as cases, respectively, to study this nexus. However, studies on this issue for the belt and road initiative (BRI) region were relatively quite rare. Third, the studied periods in most cases were short, except for the four articles of Long *et al.* (2015), Leal *et al.* (2018), Lee (2019) and Ummalla and Samal (2019). Fourth, the methods were mainly some econometric models. The classical theories of environmental Kuznets curve (EKC) and stochastic impacts by regression on population, affluence and technology (STIRPAT) model were often used. However, some other methods such as the logarithmic mean Divisia index (LMDI) was rarely introduced (Ang, 2004; Pachauri, 2014).

Why do the previous studies on the nexus between REC and CO₂ emissions have different, even opposite, findings? This question may be arising from many reasons such as the differences in economic development pattern (Chiu and Chang, 2009; Menyah and Wolde-Rufael, 2010), geographical characteristics and habits of energy use (Shafiei and Salim, 2014; Bilgili *et al.*, 2016; Dogan and Seker, 2016a, 2016b). However, as most studies

Table 1.
Representative
articles related to the
nexus between the
REC and CO₂
emission

| Author and year | Region and period | Method | Major findings |
|------------------------------------|--|-----------|---|
| Apergis <i>et al.</i> (2015) | 11 South American countries 1980–2010 | PCM | REC CO ₂ decrease |
| Attiaoui <i>et al.</i> (2017) | 22 African countries 1990–2011 | ARDL | REC CO ₂ decrease |
| Ben Jebli (2019) | 22 Central and South American countries 1995–2010 | PCM | REC CO ₂ growth |
| Bhat (2018) | Brazil, Russia, China, India and South Africa 1992–2016 | STIRPAT | REC CO ₂ decrease |
| Charfeddine and Kahia (2019) | MENA 1980–2015 | PVAR | REC CO ₂ growth, but weak |
| Chen <i>et al.</i> (2019) | China 1980–2014 | ARDL | REC CO ₂ decrease |
| Chen <i>et al.</i> (2019) | China 1995–2012 | FMOLS | REC CO ₂ decrease, only in the eastern and western regions |
| Chermi <i>et al.</i> (2017) | Tunisia 1990–2015 | ARDL | No granger causality |
| de Souza (2018) | Argentina, Brazil, Paraguay, Uruguay and Venezuela 1990–2014 | ARDL | REC CO ₂ decrease |
| Dogan and Ozturk (2017) | USA 1980–2014 | ARDL, EKC | REC CO ₂ decrease |
| Dogan <i>et al.</i> (2016a, 2016b) | Top 10 REC countries 1985–2011 | FMOLS | REC CO ₂ decrease |
| Dong <i>et al.</i> (2020) | 120 countries 1995–2015 | PCM | REC CO ₂ decrease |
| Dong <i>et al.</i> (2018) | 128 countries 1990–2014 | STIRPAT | REC CO ₂ decrease |
| Dong <i>et al.</i> (2018) | China 1993–2016 | ARDL | REC CO ₂ decrease |
| Emir <i>et al.</i> (2019) | Romania 1990–2014 | ARDL | No granger causality |
| Hamif (2018) | 34 emerging countries 1995–2015 | GMM | REC improves air quality by controlling carbon emissions |
| Ito (2016) | 31 developed countries 1996–2011 | PCM | REC CO ₂ decrease |
| Kahia <i>et al.</i> (2019) | MENA 1980–2012 | PVAR | REC CO ₂ decrease |
| Leal <i>et al.</i> (2018) | Australia 1965–2015 | ARDL | No granger causality |
| Lee (2019) | European Union 1961–2012 | PCM | REC CO ₂ decrease |
| Long <i>et al.</i> (2015) | China 1952–2012 | ARDL | No granger causality, but think that REC can decrease CO ₂ emissions |
| Lu (2017) | Asian 1990–2012 | PCM | REC CO ₂ growth |
| Mahmood <i>et al.</i> (2019) | Pakistani 1980–2014 | 3SLS, EKC | REC CO ₂ growth |
| Moutinho and Robaina (2016) | 20 European countries 1991–2010 | PVECM | REC CO ₂ decrease |
| Naz <i>et al.</i> (2019) | Pakistan 1975–2016 | ARDL | REC CO ₂ decrease |
| Pata (2018) | Turkey 1974–2014 | ARDL | No granger causality |
| Pawe Nawat and Plyngam (2017) | Thailand 1986–2012 | ARDL | No granger causality |

(continued)

| Author and year | Region and period | Method | Major findings |
|------------------------------|--|--------|---|
| Rahil <i>et al.</i> (2019) | Libya 2015 | SAM | REC CO ₂ decrease, which has economic benefits |
| Shahzad <i>et al.</i> (2018) | China and India 1970–2013 | ARDL | REC CO ₂ decrease |
| Toumi and Toumi (2019) | Saudi Arabia 1990–2014 | ARDL | REC CO ₂ decrease |
| Ummalla and Samal (2019) | China and India 1965–2016 | ARDL | No granger causality |
| Yazdi and Shakouri (2018) | Germany 1975–2014 | VAR | No granger causality |
| Zaghdoudi (2017) | OECD 1990–2015 | PCM | No granger causality |
| Zrelli (2017) | Mediterranean 1980–2011 | PVECM | REC CO ₂ growth |
| This paper | Most of the countries grouped by their income levels in BRI in 1992–2014 | LMDI | – |

Table 1.

(Zoundi, 2017; Zhang and Wang, 2019; Ullah *et al.*, 2019), the authors believe that the use of renewable energy is bound to contribute positively to carbon reduction in the long run (Rehman *et al.*, 2019; Kim Hanh and Kakinaka, 2019; Isiksal *et al.*, 2019). Even so, the previously related studies centering on this nexus for the BRI region from the income levels' perspective were still inadequate. Among them, only one article focused on the differences from the income levels' perspective but not for the BRI (Dong *et al.*, 2018a, 2018b). Therefore, using the LMDI method, the authors try to do a new work containing most of the countries in the BRI during 1992–2014 to make up for this gap, which is the innovation of this paper. The rest contents are arranged as follows. Data sources and methodology are explained in Section 2. Specific results and related discussion and analysis are listed in Section 3. Conclusions and some policy implications are summarized or proposed in Section 4.

2. Data and methodology

2.1 Data source

The datasets of grouped countries in high income (HI), upper middle income (UM), lower middle income (LM) and low income (LO) levels can be acquired from the world development indicators of the World Bank (WB). There are a total of 55 countries or areas of the BRI region selected for this study by the data availability. Their specific names are shown in Table A1.

2.2 Methodology

The additive LMDI is used, which is considered a preferred method (Ang, 2004; de Freitas and Kaneko, 2012; Mousavi *et al.*, 2017). The main variables and their respective abbreviations and units are shown in Table 2. First, the total CO₂ emissions of the studied regions are decomposed into the following equation (1) or equation (2):

$$C = \sum \frac{C_i}{E} \cdot \frac{E}{GDP} \cdot \frac{GDP}{P} \cdot P = C_E \cdot E_G \cdot G_P. \quad (1)$$

$$C = \left(\sum \frac{C_i}{E_i} \cdot \sum \frac{E_i}{E} \right) \cdot \frac{E}{GDP} \cdot \frac{GDP}{P} \cdot P = (C_I \cdot E_S) \cdot E_G \cdot G_P \cdot P \quad (2)$$

Then, the CO₂ emissions' changes of energy consumption from time period 0 (C₀) to period T (C_T) can be divided into the following contributions of different factors:

$$C_T - C_0 = \Delta C_{tot} = \Delta C_E + \Delta E_G + \Delta G_P + \Delta P \quad (3)$$

$$C_T - C_0 = \Delta C_{tot} = (\Delta C_I + \Delta E_S) + \Delta E_G + \Delta G_P + \Delta P \quad (4)$$

where:

$$\Delta C_E = L[C(T), C(0)] LN \left(\frac{C_E(T)}{C_E(0)} \right) \quad (5)$$

| Abbreviations | Variables | Units |
|-------------------|--|--|
| C | <i>CO₂ emissions of the studied region in total</i> | Tonnes |
| C _i | <i>CO₂ emissions arising from i type's energy consumption such as coal, oil, gas and other non-fossil or renewable energy</i> | Tonnes |
| E | <i>Energy-use quantity of the studied in total</i> | Tonnes oil equivalent |
| GDP | <i>GDP of the studied region in constant 2010 dollar in total</i> | Dollar |
| P | <i>The population of the studied region in total</i> | / |
| C _E | <i>Integrated carbon coefficient of energy-mix use</i> | Tonnes per tonnes of oil equivalent energy use |
| E _G | <i>Energy consumption per unit of GDP</i> | Tonnes per dollar |
| G _P | <i>GDP per person</i> | Dollar per capita |
| E _i | <i>Energy consumption amount of i type's energy</i> | Tonnes oil equivalent |
| C _i | <i>Sum of carbon coefficient effect of i type's energy-use</i> | Tonnes per tonnes of oil equivalent energy use |
| E _s | <i>Structure factor of energy use</i> | Percent |
| ΔC _{tot} | <i>Total CO₂ emissions' change from period 0 to T</i> | Tonnes CO ₂ |
| ΔC _E | <i>Integrated carbon coefficient effect of energy-mix use or REC effect</i> | Tonnes CO ₂ |
| ΔE _G | <i>Effect of energy consumption per unit of GDP (energy intensity)</i> | Tonnes CO ₂ |
| ΔG _P | <i>Effect of GDP per person (economic output)</i> | Tonnes CO ₂ |
| ΔP | <i>Effect of population amount (increase)</i> | Tonnes CO ₂ |
| ΔC _i | <i>Effect of carbon coefficient</i> | Tonnes CO ₂ |
| ΔE _S | <i>Effect of energy structure optimization</i> | Tonnes CO ₂ |

Note: / means null

Table 2.
Main variables and
their respective
abbreviations and
units

$$\Delta E_G = L[C(T), C(0)]LN\left(\frac{E_G(T)}{E_G(0)}\right) \quad (6)$$

$$\Delta G_P = L[C(T), C(0)]LN\left(\frac{G_P(T)}{G_P(0)}\right) \quad (7)$$

$$\Delta P = L[C(T), C(0)]LN\left(\frac{P(T)}{P(0)}\right) \quad (8)$$

$$\Delta C_I = L[C(T), C(0)]LN\left(\frac{C_I(T)}{C_I(0)}\right) \quad (9)$$

$$\Delta E_S = L[C(T), C(0)]LN\left(\frac{E_S(T)}{E_S(0)}\right) \quad (10)$$

where L is the logarithmic mean given by:

$$L[C(T), C(0)] = \frac{C(T) - C(0)}{\ln(C(T)) - \ln(C(0))} \quad (11)$$

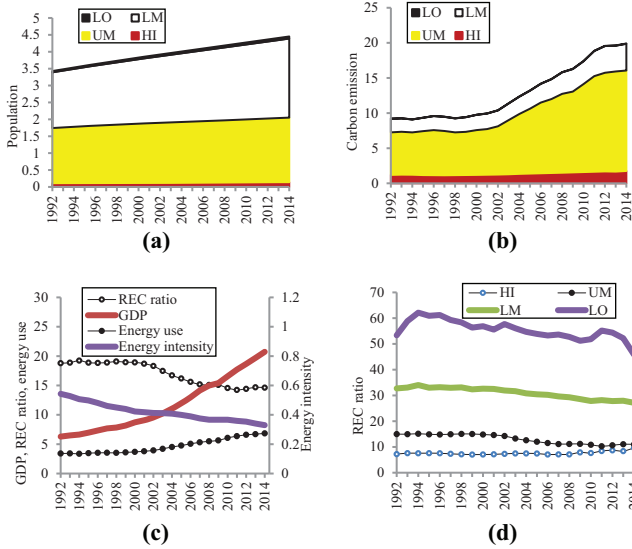
These factors' contributions can be called population effect (ΔP), economic output effect (ΔG_P), energy intensity effect (ΔE_G) and the integrated carbon coefficient effect of energy-mix use (ΔC_E). It should be noted that the impact of mitigating CO₂ emissions from the REC is mainly manifested by the ΔC_E index. Thus, this ΔC_E index can also be simply called the REC effect. Furthermore, this REC effect can be divided into the following two effects of carbon emissions coefficient of energy use (ΔC_I) and energy structure optimization and (ΔE_S). The reasons are the follows. First, the CO₂ emissions produced by the REC are less than that of the equivalent fossil fuels. Thus, with the rise of the REC amount, the carbon coefficient of the energy-mix should be smaller, the corresponding effect of mitigating carbon emissions be more obvious. Second, the more the REC ratio in total energy consumption is, the larger the mitigation effect of carbon emissions from the energy structure optimization is.

3. Results and discussion

3.1 Decomposition results of the growth of the total carbon dioxide emission in the belt and road initiative

As shown in [Figure 1](#), the population in the BRI was 3.43 billion in 1992 and it stably grew up to 4.45 billion in 2014, with a total increasing amount of 1.02 billion and an annual average increasing amount of 46.4 million and rate of 1.19%, respectively. Similarly, the BRI's CO₂ emission was 9.21 billion tonnes (Bt) in 1992, but it grew up and down to 19.91 Bt in 2014, with the total increasing amount of 10.70 Bt and the annual average increasing amount of 486.3 million tonnes (Mt) and rate of 3.57%. The gross domestic product (GDP) and energy consumptions were 6.29×10^3 billion dollars and 3.42 Bt of oil equivalent (Btoe) in 1992 and they increased to 20.73×10^3 billion dollar and 6.83 Btoe in 2014, with the annual average changing amount (rate) of 0.66×10^3 billion dollars (5.57%) and 155.4 Mt (3.20%), respectively. However, the energy intensity had a decreasing change trend due to the faster increasing rate of GDP than the rate of energy use. It was 0.543 toe/10³ dollar in 1992 and decreased to 0.330 toe/10³ dollar in 2014, with the annual average change amount of -0.0097 toe/10³ dollar and a rate of -2.24% . It should be noted that the REC's percentages in the total energy uses were also decreasing from 18.80% in 1992 to 14.63% in 2014, with the annual average changing amount (rate) of -0.19% (-1.13%). These results meant that the exploitation and utilization of renewable energy in the BRI were not sufficient.

Then, the growth of BRI's CO₂ emissions (ΔC_{tot}) from 1992–2014 (10.70 Bt) was decomposed into the effects of the following four factors: population effect (ΔP), economic output effect (ΔG_P), energy intensity effect (ΔE_G) and the REC effect (ΔC_E), based on the [equation \(1\)](#). Particularly, the effects driven by the four factors were 3.61, 12.89, -6.90 and 1.10 Bt, respectively, with the contributions of 33.70%, 120.47%, -64.49% and 10.32% to the total CO₂ change ([Table 3](#)). Then, the ΔC_{tot} was decomposed into the five factors' effects by [equation \(2\)](#) as follows: ΔP , ΔG_P , ΔE_G , energy structure effect (ΔE_S) and carbon coefficient effect (C_I). The effects driven by the five factors were 3.61, 12.89, -6.90 , 0.41 and 0.69 Bt, with the contributions of 33.70%, 120.47%, -64.49% , 3.84% and 6.48%. These results indicated that the economic output effect was the most important driver of carbon emissions growth, followed by the population effect. Inversely, the only energy intensity



Notes: (a) Populations of grouped countries of HI, UM, LM and LO; (b) carbon emissions of grouped countries of HI, UM, LM and LO; (c) the total GDP, energy use, energy intensity and REC ratio in the total energy use; and (d) REC ratios in the respective energy uses of HI, UM, LM and LO groups

Figure 1. Population, GDP, carbon emissions, energy use/ consumption, energy intensity and REC ratios of the BRI region

| Model 1 | ΔC_{tot}^a | ΔP^b | ΔG_P^b | ΔE_G^b | ΔC_E^b | |
|-----------------------|--------------------|--------------|----------------|----------------|----------------|----------------|
| Numerical values (Bt) | 10.70 | 3.61 | 12.89 | -6.90 | 1.10 | |
| Contributions (%) | / | 33.70 | 120.47 | -64.49 | 10.32 | |
| Model 2 | ΔC_{tot}^a | ΔP^b | ΔG_P^b | ΔE_G^b | ΔE_S^b | ΔC_I^b |
| Numerical values (Bt) | 10.70 | 3.61 | 12.89 | -6.90 | 0.41 | 0.69 |
| Contributions (%) | / | 33.70 | 120.47 | -64.49 | 3.84 | 6.48 |

Notes: ^ameans the change of CO₂ emissions; ^bmeans the decomposed driving factors; indicates a negative (mitigation) effect on CO₂ emissions

Table 3. Decomposition results of the growth of the total CO₂ emissions in the BRI region in 1992–2014

effect was the most obvious inhibitor of carbon emissions growth. The REC effect (sum of energy structure effect and carbon coefficient effect) still had the driving impact on the CO₂ emissions due to the decreasing trend of the REC ratio during 1992–2014.

It should be noteworthy that no matter the CO₂ emissions' growth was decomposed into four or five factors, the amounts and percentages of driving contribution from the same factors (ΔP , ΔG_P and ΔE_G) were unchanged. Moreover, the REC effect ΔC_E was 1.10 Bt and its contribution was 10.32%. The two sub-factors' effects (ΔE_S and C_I) of the REC were 0.41 and 0.69 Bt and their effects' sum was equivalent to the REC effect (1.10 Bt, Table 3). Similarly, the two sub-factors' contributions were 3.84% and 6.48% and their contributions' sum was also equivalent to the REC (10.32%). These results showed that the REC had

always an overall driving impact of 10.32% on the CO₂ emissions' growth, which contained the two effects of energy structure (3.84%) and carbon coefficient (6.48%).

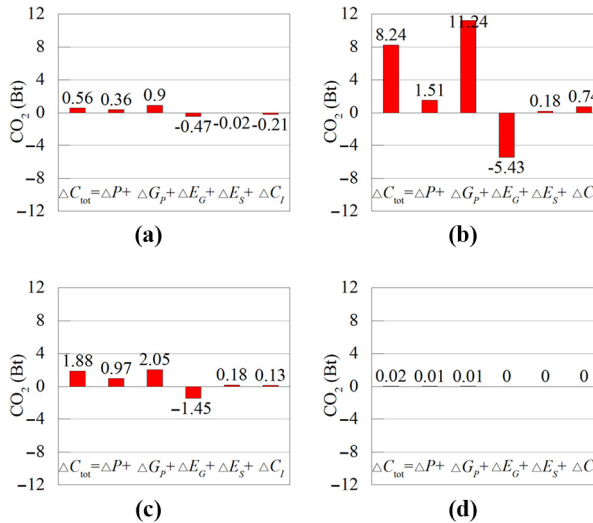
Nevertheless, as shown in Figure 1, the populations, carbon emissions and REC ratios of HI, UM, LM and LO groups had some obviously different changing trends. Thus, it is necessary and meaningful to study deeply the different reasons or mechanisms of carbon emissions' mitigation for the four grouped countries of the BRI due to their heterogeneity.

3.2 Comparisons of the decomposition results of grouped countries by their different income levels

Only five factors' decomposition results of grouped countries of HI, UM, LM and LO levels from 1992–2014 were listed in Figure 2. The corresponding (annual average) contributions were in Table 4. It can be easily seen that the growth amounts of HI, UM, LM and LO levels' groups from 1992–2014 were 0.56, 8.28, 1.88 and 0.02 Bt, respectively. Thus, their contributions to the total CO₂ growth were 5.28%, 77.02%, 17.54% and 0.16%. The corresponding annual average contributions were 0.24%, 3.50%, 0.80% and 0.01%. Namely, as the black numbers, prior attention should be paid to the UM countries. The LM and HI countries followed it and the LO countries should be the last.

For the UM group, the change CO₂ emissions driven by the five factors (ΔP , ΔG_P , ΔE_G , ΔE_S and C_I) were 1.51, 11.24, -5.43, 0.18 and 0.74 Bt and the corresponding contributions (annual average contributions) were 14.08% (0.64%), 105.07% (4.78%), -50.76% (-2.31%), 1.70% (0.08%) and 6.91% (0.31)%. The REC effect's contribution was 8.61% (= 1.70 + 6.91)% and its annual average contribution was 0.39% (= 0.08 + 0.31)%. These results showed that the economic output effect was the most important driver of carbon emissions growth, followed by the population effect. The driving impacts of the energy structure effect and carbon coefficient effect were less than the above two. Inversely, the

Figure 2. Detailed decomposition results for four different groups by their income levels (ΔC_{tot} , ΔP , ΔG_P , ΔE_G , ΔE_S and C_I denote the total CO₂ change in the BRI region and the effects of population, economic output, energy intensity, energy structure and carbon coefficient, respectively)



Notes: (a) HI group; (b) UM group; (c) LM group; (d) LO group

energy intensity effect was the only and obvious inhibitor of carbon emissions growth. Similarly, for the LM group, the five factors' effects were 0.97, 2.05, -1.45, 0.18 and 0.13 Bt and the corresponding contributions (annual average contributions) were 9.02% (0.41%), 19.16% (0.87%), -13.54% (-0.62%), 1.65% (0.07%) and 1.25% (0.06)%. The REC effect's contribution was 2.90% (= 1.65 + 1.25)% and its annual average contribution was 0.13% (= 0.07 + 0.06)%.

However, for the HI group, the five factors' effects were 0.36, 0.90, -0.47, -0.02 and -0.20 Bt and their contributions (annual average contributions) were 3.34% (0.15%), 8.43% (0.38%), -4.40% (-0.20%), -0.21% (-0.01%) and -1.88% (-0.09)%. The REC effect's contribution was -2.09% (= -0.21 - 1.88)% and its annual average contribution was -0.10% (= -0.01 - 0.09)%. These results showed that the economic output effect was still the most important driver of CO₂ growth, followed by the population effect. Inversely, the energy intensity effect was the most obvious inhibitor of CO₂ growth, followed by the carbon coefficient effect and energy structure effect. Finally, for the LO group, the five factors' effects were 0.01, 0.01, 0.00, 0.00 and 0.00 Bt and their contributions (annual average contributions) were 0.11% (0.01%), 0.08% (0.00%), -0.04% (-0.00%), 0.03% (0.00%) and -0.02% (0.00)%. The REC effect's contribution was 0.01% (= 0.03 - 0.02)% and its annual average contribution was 0.00% (= 0.00 + 0.00)%. The population effect was the most important driver of CO₂ growth, followed by the economic output effect and energy structure effect. Inversely, the energy intensity effect was the most obvious inhibitor, followed by the carbon coefficient effect.

So, it can be concluded that the HI group had the most obviously REC's mitigating effect of -2.09%. Inversely, the UM group had the largest REC's driving effect of 8.61%, followed by the LM and LO groups (2.90% and 0.01%). Then, the population and economic output were always the most important drivers, but the energy intensity was the inhibitor, which was consistent with other studies (Kahia *et al.*, 2019; Emir and Bekun, 2019; Lee, 2019). Third, the contribution of the energy structure effect was negative only for the HI group (black and italic numbers, Table 4). This result indicated that the REC of the LO group had an initially and relatively unreasonable structure, in which the REC had a slight impact on the CO₂ growth (0.03%). However, with economic development and population increase, the REC structure of the LM and UM groups (i.e. India and China) overly depended on fossil fuel, and thus become extremely unreasonable and had an obviously driving impact on the CO₂ growth (1.65% and 1.70%). When entering into the HI group, people were more likely to use renewable energy for replacing traditional fossil fuels. Thus, the REC structure of the HI group became relatively reasonable and had a certain mitigating impact on the CO₂ changes (-0.21%). Last, the carbon coefficient effect was the inhibitor of the CO₂ growth only in the HI and LO groups (-1.88% and -0.02%). The reasons were that, first, with the growth of

Table 4. Changes of the CO₂ emissions' growths and contributions of decomposition results for four different countries' groups by their income levels in BRI in 1992–2014

| Groups | Variables | ΔC_{tot}^a | ΔP^b | ΔG_p^b | ΔE_G^b | ΔE_S^b | ΔC_I^b |
|--------|--------------------------|-----------------------|-----------------------|------------------------|-------------------------|------------------------|------------------------|
| HI | <i>Contributions (%)</i> | 5.28 ^{0.24} | 3.34 ^{0.15} | 8.43 ^{0.38} | -4.40 ^{-0.20} | -0.21 ^{-0.01} | -1.88 ^{-0.09} |
| UM | <i>Contributions (%)</i> | 77.02 ^{3.50} | 14.08 ^{0.64} | 105.07 ^{4.78} | -50.76 ^{-2.31} | 1.70 ^{0.08} | 6.91 ^{0.31} |
| LM | <i>Contributions (%)</i> | 17.54 ^{0.80} | 9.02 ^{0.41} | 19.16 ^{0.87} | -13.54 ^{-0.62} | 1.65 ^{0.07} | 1.25 ^{0.06} |
| LO | <i>Contributions (%)</i> | 0.16 ^{0.01} | 0.11 ^{0.01} | 0.08 ^{0.00} | -0.04 ^{0.00} | 0.03 ^{0.00} | -0.02 ^{0.00} |

Note: Numbers in the top right corner mean the annual average changes or contributions

REC, the carbon coefficient should inversely decrease, which given rise to the inhibiting impact on the CO₂ change. Then, the REC ratios, realistically, only in the HI group and part periods of the LO group, had some obvious growths (Figure 1).

3.3 Comparisons of the decomposition results of four countries' groups during three varied periods

The total CO₂ changes decomposed into five factors during three periods (1992–2000, 2000–2010 and 2010–2014) are compared in Table 5. The corresponding change percentages of CO₂ growth and contributions of the five drivers' effects are in Figure 3.

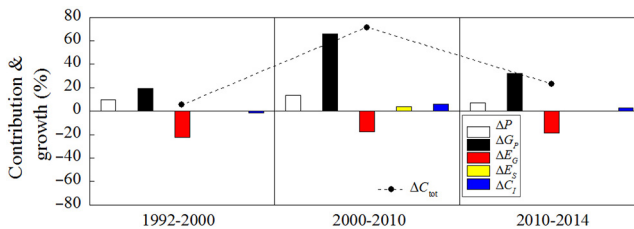
3.3.1 Overall decomposition results during three varied periods. It can be easily seen that the BRI's CO₂ emissions increased 0.56 Bt with a change percentage of 5.18% in the 1st stage (Figure 3 and Table 5) and then sharply increased 7.65 Bt with the percentage of 71.52% in the 2nd stage. In the 3rd stage, the CO₂ increased 2.49 Bt with a percentage of 23.30%. Overall, the CO₂ emissions exhibited a sequentially increasing trend with a total growth amount of 10.70 (= 0.56 + 7.65 + 2.49) Bt.

The population had always a driving impact on the CO₂ growth, with the increasing effects of 1.04, 1.45 and 0.76 Bt and contributions of 9.74%, 13.57% and 7.13% from Stages 1 to 3, respectively (Figure 3 and Table 5). Similarly, the economic output also always had a driving impact on the CO₂ growth with the increasing effects (contributions) of 2.05 (19.20%), 7.02 (65.66%) and 3.42 Bt (31.97%). However, the energy intensity had always a mitigating impact on the CO₂ growth, with the changing effects (contributions) of -2.37 (-22.16%), -1.88 (-17.56%) and -1.99 Bt (-18.56%). In addition, the change trends of the REC effect (contained energy structure effect and carbon coefficient effect) were not stable and often had only a relatively small influence on the CO₂ emissions (Figure 3 and Table 5). Thus, for more deeply analyzing the REC's impact on mitigating the CO₂ emission, the authors divided the BRI into four countries' groups by their different income levels during three varied periods.

Table 5.
The total CO₂ emissions change (Mt) and effects (Mt) of the decomposed drivers during three varied periods

| Periods | ΔC_{tot}^a | ΔP^b | ΔG_P^b | ΔE_G^b | ΔE_S^b | ΔC_I^b |
|-----------|--------------------|--------------|----------------|----------------|----------------|----------------|
| 1992–2000 | 555.15 | 1,041.59 | 2,054.70 | -2,371.25 | -11.67 | -159.24 |
| 2000–2010 | 7,651.51 | 1,452.34 | 7,024.82 | -1,878.19 | 399.28 | 653.26 |
| 2010–2014 | 2,493.25 | 762.57 | 3,420.32 | -1,986.24 | -5.46 | 302.06 |

Figure 3.
Change percentage of CO₂ emissions growth and the contribution of the decomposed drivers' effects in three varied periods



3.3.2 Decomposition results of four countries' groups by their income levels during three varied periods. The CO₂ emissions change and effects of the decomposed drivers from four countries' groups by their income levels during three varied periods are shown in Table 6. The corresponding change percentage of CO₂ growth and the contributions of five decomposed drivers' effects are in Figure 4. The annual average change percentage of CO₂ emission and contribution rates of drivers during three varied periods are shown in Table 7. It can be easily seen that the HI, UM and LM groups had the obvious CO₂ changes. However, the change of the LO group can almost be neglected.

The CO₂ emission of the HI group increased 36.73 Mt with a change percentage of 0.34% to the total CO₂ growth and an annual average change rate of 0.04% in the 1st stage (Figure 4, Tables 6 and 7). Then, it sharply increased 406.05 Mt with the percentage of 3.80% and the change rate of 0.38% in the 2nd stage. In the 3rd stage, the CO₂ increased 121.92 Mt with a percentage (change rate) of 1.14% (0.28%). Overall, the HI group's CO₂ exhibited a sequentially increasing trend with a total growth amount of 564.70 Mt.

The HI group's population had always a driving impact on the CO₂ growth with the increasing effects (annual average contributions) of 69.71 (0.08%), 193.61 (0.18%) and 87.58 Mt (0.20%) from the Stages 1st to 3rd. Similarly, the economic output also always had a driving impact on the CO₂ growth with the effects (contributions) of 322.48 (0.38%), 362.97 (0.34%) and 165.64 Mt (0.39%). However, the energy intensity had always a mitigating impact, with the effects (contributions) of -296.72 (-0.35%), -7.07 (-0.01%) and -123.85 Mt (-0.29%). The energy structure effects were not stable and often only had a small influence on the CO₂ growth, with the effects (contributions) of 1.18 (0.00%), -4.77 (0.00%) and -20.25 Mt (-0.05%). The carbon coefficient had an overall mitigating effect except for the 3rd stage, with the effects (contributions) of -59.93 (-0.07%), -138.69 (-0.13%) and 12.8 Mt (0.03%). These results indicated that the REC effect of the HI group had an overall mitigating impact on the BRI's CO₂ growth by optimizing the structure of energy use or decreasing the corresponding carbon coefficient. Its annual average contributions were -0.07% (= 0.00 - 0.07)%, -0.13% (= 0.00 - 0.13)% and -0.02% (= -0.05 + 0.03)% from the Stages 1st to 3rd, respectively.

Similarly, the CO₂ emission of the UM (LM) group increased 283.63 (232.44) Mt with a change percentage of 2.65% (2.17%) and an annual average change rate of 0.33% (0.27%) in the 1st stage. It also sharply increased 6,151.11 (1,083.27) Mt with the percentage of 57.49% (10.13%) and a change rate of 5.75% (1.01%) in the 2nd stage. In the 3rd stage, this CO₂ increased by 1,805.32 (561.12) Mt with a percentage of 16.87% (5.24%) and a change rate of

| Groups | Periods | ΔC_{tot}^a | ΔP^b | ΔG_P^b | ΔE_G^b | ΔE_S^b | ΔC_I^b |
|--------|-----------|---------------------------|--------------|----------------|----------------|----------------|----------------|
| HI | 1992-2000 | 36.73 | 69.71 | 322.48 | -296.72 | 1.18 | -59.93 |
| | 2000-2010 | 406.05 | 193.61 | 362.97 | -7.07 | -4.77 | -138.69 |
| | 2010-2014 | 121.92 | 87.58 | 165.64 | -123.85 | -20.25 | 12.80 |
| UM | 1992-2000 | 283.63 | 452.90 | 1,645.05 | -1,773.60 | 7.28 | -48.01 |
| | 2000-2010 | 6,151.11 | 537.13 | 6,241.05 | -1,495.20 | 155.97 | 712.16 |
| | 2010-2014 | 1,805.32 | 339.36 | 2,978.20 | -1,567.25 | -2.43 | 57.45 |
| LM | 1992-2000 | 232.44 | 298.77 | 319.85 | -347.83 | 2.40 | -40.75 |
| | 2000-2010 | 1,083.27 | 402.62 | 1,134.40 | -633.33 | 147.00 | 32.58 |
| | 2010-2014 | 561.12 | 186.01 | 566.79 | -413.56 | 24.37 | 197.51 |
| LO | 1992-2000 | 1.35 | 4.13 | 1.41 | -3.66 | -1.41 | 0.88 |
| | 2000-2010 | 11.09 | 4.84 | 6.21 | -3.56 | 2.53 | 1.08 |
| | 2010-2014 | 4.88 | 1.85 | -0.03 | 5.47 | 3.30 | -5.71 |

Table 6.
The CO₂ emissions change (Mt) and effects (Mt) of the decomposed drivers from four countries' groups by their income levels during three varied periods

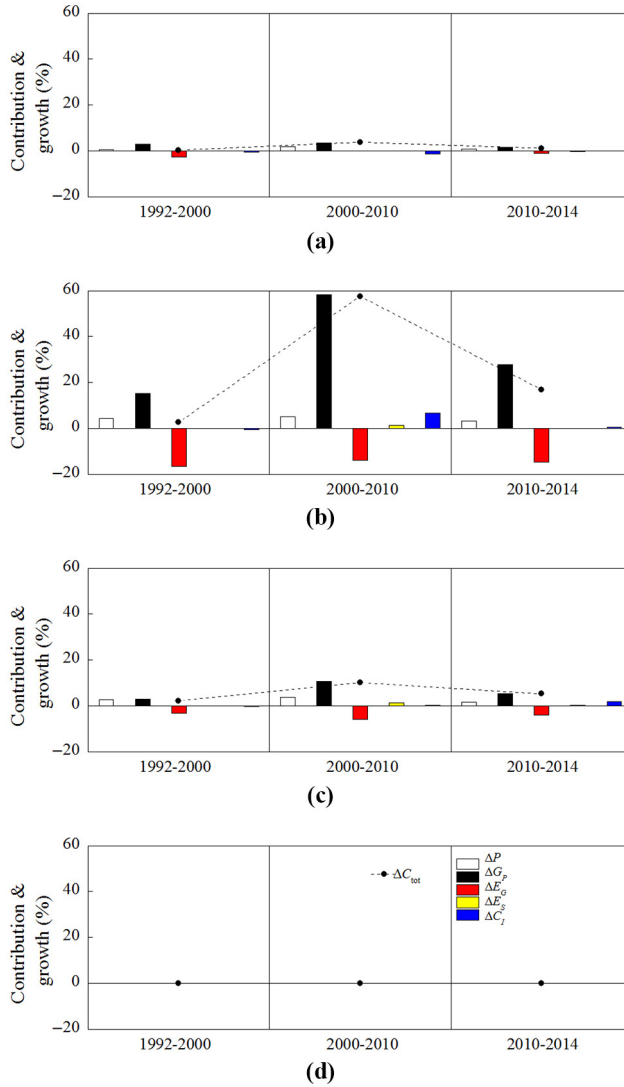


Figure 4. Change percentage of CO₂ emissions growth and the contribution of the decomposed drivers' effects from four different countries' groups by their income levels during three varied periods

Notes: (a) HI group; (b) UM group; (c) LM group; (d) LO group

4.22% (1.31%). Overall, the CO₂ emission of the UM (LM) group also exhibited a sequentially increasing trend with a total growth amount of 8,240.06 (1,876.83) Mt. In the driver's analysis, population, economic output, etc. had a similar impact on the BRI's CO₂ growth, but all them were omitted for saving space. In spite of this, it can be easily seen that the CO₂ emissions growth and the corresponding drivers' contributions of the LO group were extremely small (Figure 4, Tables 6 and 7). So, these results were also omitted.

However, it should be noteworthy that the driving effects of economic output on the BRI's CO₂ emission are quite obvious, especially in the 2nd stages of UM and LM groups (Figure 4). These results could be arising from the fact that some developing countries such as China (in UM group) and India (in LM group) had a large economic output and concurrently the quick economic development (Table A1). Meanwhile, their energy-use efficiency was relatively small. However, many developed countries, especially in the HI group's countries, paid much attention to energy conservation and carbon emissions reduction by various means and measures, which could be reflected from the HI group's annual average contribution rate of energy intensity effect (always negative, Table 7).

In addition, an interesting result was that only the energy intensity effect of the LO group was positive (5.47 Mt) in the 3rd stage and, concurrently, the REC effect (sum of energy structure effect and carbon coefficient effect) was negative (3.30 – 5.71 = –2.41 Mt). These results indicated that many poor countries recently developed their own economy and reduced carbon emissions only by using more and more renewable energy to replace the utilization of fossil fuels such as coal, oil and natural gas. However, worriedly, they did not pay attention to improve their level of science and technology and the production efficiency for saving energy and reducing energy intensity. So, with the fast development of the economy and quick growth of the REC, the energy intensity exhibited a driving impact (although the REC effect brought out a mitigating impact) on the CO₂ growth.

3.4 Sensitivity analysis

In this study, the reliability and stability of the results are indisputable. However, these results may have a few slight errors. The reasons are as follows. First, some data themselves are generated and acquired by using the reasonable estimating method. Thus, the inevitable, although tiny error indeed exists in these databases. Then, renewable energy has many categories such as hydro, wind, solar energy, geothermal energy, biomass energy. However, the complete data containing each category are almost impossible to be found. Thus, the subtraction of total energy consumption and the total fossil energy consumption is used to replace the total REC. The approximate approach may also bring certain errors. Third, some small errors may be produced by the computation itself such as the rounded integer arithmetic method.

| Groups | Periods | ΔC_{tot}^a | ΔP^b | ΔG_P^b | ΔE_G^b | ΔE_S^b | ΔC_I^b |
|--------|-----------|--------------------|--------------|----------------|----------------|----------------|----------------|
| HI | 1992–2000 | 0.04 | 0.08 | 0.38 | –0.35 | 0.00 | –0.07 |
| | 2000–2010 | 0.38 | 0.18 | 0.34 | –0.01 | 0.00 | –0.13 |
| | 2010–2014 | 0.28 | 0.20 | 0.39 | –0.29 | –0.05 | 0.03 |
| UM | 1992–2000 | 0.33 | 0.53 | 1.92 | –2.07 | 0.01 | –0.06 |
| | 2000–2010 | 5.75 | 0.50 | 5.83 | –1.40 | 0.15 | 0.67 |
| | 2010–2014 | 4.22 | 0.79 | 6.96 | –3.66 | –0.01 | 0.13 |
| LM | 1992–2000 | 0.27 | 0.35 | 0.37 | –0.41 | 0.00 | –0.05 |
| | 2000–2010 | 1.01 | 0.38 | 1.06 | –0.59 | 0.14 | 0.03 |
| | 2010–2014 | 1.31 | 0.43 | 1.32 | –0.97 | 0.06 | 0.46 |
| LO | 1992–2000 | 0.00 | 0.00 | 0.00 | 0.00 | 0.00 | 0.00 |
| | 2000–2010 | 0.01 | 0.00 | 0.01 | 0.00 | 0.00 | 0.00 |
| | 2010–2014 | 0.01 | 0.00 | 0.00 | 0.01 | 0.00 | –0.01 |

Table 7.
The annual average
change percentage of
CO₂ emission (%)
and contribution
rates (%) of drivers
from four countries'
groups during three
varied periods

4. Conclusions and policy implications

The REC must have an important significance to mitigate the CO₂ emissions and inhibit climate warming. However, so far, still few scientists analyzed this underlying impact's differences from the income levels' perspective. Thus, the authors divided most countries of the BRI region into four groups (HI, UM, LM and LO) by their income levels during 1992–2014 to analyze this issue using the preferred LMDI method.

Results show: the REC had an overall driving effect on the total CO₂ change, due to the decreasing trend of the REC during 1992–2014. However, the HI group's REC had the most obviously mitigating effect of -2.09% . Inversely, the UM group's REC had the largest driving effect of 8.61% , followed by the LM and LO groups (2.90% and 0.01% , respectively). These results indicated that it is important to exploit and use renewable energy, especially in developing or underdeveloped countries. Because renewable energy uses are extremely insufficient and even decreasing in these countries. Then, in some countries such as China (in the UM group) and India (in the LM group), their economic development overly depended on the consumption of energy. This is because the driving effects of economic output in these countries are quite obvious, especially in the 2nd stage. More worriedly, the use of renewable energy in these countries was still relatively insufficient. This is because their REC effects were always exhibiting an overall driving impact. Thus, some special attention should also be paid to these countries. Third, during 2010–2014, only the energy intensity effect of the LO group was positive (5.47 Mt) and, concurrently, the REC effect of this group was negative (-2.41 Mt). These results showed that many poor countries recently reduced carbon emissions only by extensively using renewable energy not enhancing the corresponding efficiency. However, the other rich countries paid enough attention to reduce carbon by improving the level of science and technology to lower energy intensity. Thus, some particular policy implications for reducing CO₂ in the BRI's different countries were recommended.

First, on a whole, it should become a long-term development strategy to exploit and use renewable energy to replace the use of fossil fuels. This is because, presently, only the REC of HI countries had the obvious inhibiting impact (-2.09%) on the CO₂ growth. All the other groups' REC of upper-middle income, lower-middle income and lower income have the driving impact on the CO₂ growth. The exploitation and utilization of renewable energy in these countries are relatively not enough.

Then, for the HI countries, people should continue to strengthen the development and utilization of renewable energy. At the same time, people should also continue to strengthen the relevant scientific research and improve the technology and efficiency of energy utilization. Thereby, to the greatest extent, it is possible to achieve rapid economic development and, concurrently, to use the least energy amount and to generate the least corresponding carbon emissions. Moreover, the advanced technologies or methods of renewable energy exploitation and utilization in the HI countries should, as far as possible, transfer to other countries through the appropriate way or being paid. So, based on these advanced technologies, the exploitation and utilization of the related renewable energy in developing or underdeveloped countries become more easily and quickly be come true.

Next, in the middle income countries such as China and India, the economic development overly depended on the consumption of a large number of energy (particularly fossil fuel). At the same time, the use of renewable energy was still relatively insufficient in these countries. Therefore, people should give half attention to exploit and use the related renewable energy and also concurrently give the other half attention to improve the related level of science and technology and the efficiency of energy use. These two aspects have the

same importance and significance. Of course, the particular measures contained the advanced technology's introduction of renewable energy exploitation and energy efficiency improvement.

Finally, many poor countries in the lower income group developed their own economy and reduced carbon emissions only by using more and more renewable energy to replace fossil fuel. Meanwhile, they did not pay enough attention to improve the level of science and technology for saving energy. Therefore, in these countries, people should give prior importance to improve their own energy-use efficiency to save energy and reduce emissions. All the related technologies or measures helpful to improve the efficiencies of not only the renewable energy use but also the fossil energy use, should be given the same attention and be exploited, used or introduced.

References

- Ang, B.W. (2004), "Decomposition analysis for policymaking in energy", *Energy Policy*, Vol. 32 No. 9, pp. 1131-1139.
- Apergis, N. and Payne, J.E. (2015), "Renewable energy, output, carbon dioxide emissions, and oil prices: evidence from South america", *Energy Sources Part B-Economics Planning and Policy*, Vol. 10 No. 3, pp. 281-287.
- Armstrong, R.C., Wolfram, C., de Jong, K.P., Gross, R., Lewis, N.S., Boardman, B., Ragauskas, A.J., Ehrhardt-Martinez, K., Crabtree, G. and Ramana, M.V. (2016), "The frontiers of energy", *Nature Energy*, Vol. 1 No. 1, p. 15020.
- Attiaoui, I., Toumi, H., Ammouri, B. and Gargouri, I. (2017), "Causality links among renewable energy consumption, CO₂ emissions, and economic growth in africa: evidence from a panel ARDL-PMG approach", *Environmental Science and Pollution Research*, Vol. 24 No. 14, pp. 13036-13048.
- Aydogan, B. and Vardar, G. (2019), "Evaluating the role of renewable energy, economic growth and agriculture on CO₂ emission in E7 countries", *International Journal of Sustainable Energy*, Vol. 39 No. 4, pp. 1-14, doi: [10.1080/14786451.2019.1686380](https://doi.org/10.1080/14786451.2019.1686380).
- Barack, O. (2017), "The irreversible momentum of clean energy", *Science*, Vol. 355 No. 6321, pp. 126-129.
- Ben Jebli, M., Ben Youssef, S. and Apergis, N. (2019), "The dynamic linkage between renewable energy, tourism, CO₂ emissions, economic growth, foreign direct investment, and trade", *Latin American Economic Review*, Vol. 28 No. 1, pp. 2, doi: [10.1186/s40503-019-0063-7](https://doi.org/10.1186/s40503-019-0063-7).
- Bhat, J.A. (2018), "Renewable and non-renewable energy consumption-impact on economic growth and CO₂ emissions in five emerging market economies", *Environmental Science and Pollution Research*, Vol. 25 No. 35, pp. 35515-35530.
- Bhattacharya, M., Churchill, S.A. and Paramati, S.R. (2017), "The dynamic impact of renewable energy and institutions on economic output and CO₂ emissions across regions", *Renewable Energy*, Vol. 111, pp. 157-167.
- Bilan, Y., Streimikiene, D., Vasylieva, T., Lyulyov, O., Pimonenko, T. and Pavlyk, A. (2019), "Linking between renewable energy, CO₂ emissions, and economic growth: challenges for candidates and potential candidates for the EU membership", *Sustainability*, Vol. 11 No. 6, p. 1, doi: [10.3390/su11061528](https://doi.org/10.3390/su11061528).
- Bilgili, F., Kocak, E. and Bulut, U. (2016), "The dynamic impact of renewable energy consumption on CO₂ emissions: a revisited environmental kuznets curve approach", *Renewable and Sustainable Energy Reviews*, Vol. 54, pp. 838-845.
- Charfeddine, L. and Kahia, M. (2019), "Impact of renewable energy consumption and financial development on CO₂ emissions and economic growth in the MENA region: a panel vector autoregressive (PVAR) analysis", *Renewable Energy*, Vol. 139, pp. 198-213.

- Chen, Y., Wang, Z. and Zhong, Z. (2019), "CO₂ emissions, economic growth, renewable and non-renewable energy production and foreign trade in China", *Renewable Energy*, Vol. 131, pp. 208-216.
- Chen, Y., Zhao, J., Lai, Z., Wang, Z. and Xia, H. (2019), "Exploring the effects of economic growth, and renewable and non-renewable energy consumption on china's CO₂ emissions: evidence from a regional panel analysis", *Renewable Energy*, Vol. 140, pp. 341-353.
- Cherni, A. and Jouini, S.E. (2017), "An ARDL approach to the CO₂ emissions, renewable energy and economic growth nexus: the tunisian evidence", *International Journal of Hydrogen Energy*, Vol. 42 No. 48, pp. 29056-29066.
- Chiu, C.L. and Chang, T.H. (2009), "What proportions of renewable energy supplies is needed to initially mitigate CO₂ emissions in OECD member countries", *Renewable and Sustainable Energy Reviews*, Vol. 13 Nos 6/7, pp. 1669-1674.
- de Freitas, L.C. and Kaneko, S. (2012), "Decomposition of CO₂ emissions change from energy consumption in Brazil: challenges and policy implications", *Energy Policy*, Vol. 39 No. 3, pp. 1495-1504.
- de Souza, E.S., Freire, F. and Pires, J. (2018), "Determinants of CO₂ emissions in the MERCOSUR: the role of economic growth, and renewable and non-renewable energy", *Environmental Science and Pollution Research*, Vol. 25 No. 21, pp. 20769-20781.
- Dogan, E. and Seker, F. (2016a), "Determinants of CO₂ emissions in the european union: the role of renewable and non-renewable energy", *Renewable Energy*, Vol. 94, pp. 429-439.
- Dogan, E. and Seker, F. (2016b), "The influence of real output, renewable and non-renewable energy, trade and financial development on carbon emissions in the top renewable energy countries", *Renewable and Sustainable Energy Reviews*, Vol. 60, pp. 1074-1085.
- Dogan, E. and Ozturk, I. (2017), "The influence of renewable and non-renewable energy consumption and real income on CO₂ emissions in the USA: evidence from structural break tests", *Environmental Science and Pollution Research*, Vol. 24 No. 11, pp. 10846-10854.
- Dong, K., Hochman, G., Sun, R., Li, H. and Liao, H. (2018a), "CO₂ emissions, economic and population growth, and renewable energy: empirical evidence across regions", *Energy Economics*, Vol. 75, pp. 180-192.
- Dong, K., Sun, R., Jiang, H. and Zeng, X. (2018b), "CO₂ emissions, economic growth, and the environmental kuznets curve in China: what roles can nuclear energy and renewable energy play?", *Journal of Cleaner Production*, Vol. 196, pp. 51-63.
- Dong, K., Dong, X. and Jiang, Q. (2020), "How renewable energy consumption lower global CO₂ emissions? Evidence from countries with different income levels", *The World Economy*, Vol. 43 No. 6, pp. 1665-1698.
- Emir, F. and Bekun, F.V. (2019), "Energy intensity, carbon emissions, renewable energy, and economic growth nexus: new insights from Romania", *Energy and Environment*, Vol. 30 No. 3, pp. 427-443.
- Hanif, I. (2018), "Impact of economic growth, nonrenewable and renewable energy consumption, and urbanization on carbon emissions in Sub-Saharan africa", *Environmental Science and Pollution Research*, Vol. 25 No. 15, pp. 15057-15067.
- Isiksal, A.Z., Samour, A. and Isiksal, H. (2019), "Revisiting renewable and Non-Renewable energy consumption and CO₂ emissions in caspian basin", *International Journal of Ecological Economics and Statistics*, Vol. 40 No. 4, pp. 25-39.
- Ito, K. (2016), "CO₂ emissions, renewable and non-renewable energy consumption, and economic growth: evidence from panel data for developed countries", *Economics Bulletin*, Vol. 36 No. 1, pp. 553-559.
- Kahia, M., Ben Jebli, M. and Belloumi, M. (2019), "Analysis of the impact of renewable energy consumption and economic growth on carbon dioxide emissions in 12 MENA countries", *Clean Technologies and Environmental Policy*, Vol. 21 No. 4, pp. 871-885.

- Kim Hanh, N. and Kakinaka, M. (2019), "Renewable energy consumption, carbon emissions, and development stages: some evidence from panel cointegration analysis", *Renewable Energy*, Vol. 132, pp. 1049-1057.
- Leal, P.H., Marques, A.C. and Fuinhas, J.A. (2018), "How economic growth in Australia reacts to CO₂ emissions, fossil fuels and renewable energy consumption", *International Journal of Energy Sector Management*, Vol. 12 No. 4, pp. 696-713.
- Lee, J.W. (2019), "Long-run dynamics of renewable energy consumption on carbon emissions and economic growth in the European Union", *International Journal of Sustainable Development and World Ecology*, Vol. 26 No. 1, pp. 69-78.
- Long, X., Naminshe, E.Y., Du, J. and Zhuang, J. (2015), "Nonrenewable energy, renewable energy, carbon dioxide emissions and economic growth in China from 1952 to 2012", *Renewable and Sustainable Energy Reviews*, Vol. 52, pp. 680-688.
- Lu, W.C. (2017), "Renewable energy, carbon emissions, and economic growth in 24 Asian countries: evidence from panel cointegration analysis", *Environmental Science and Pollution Research*, Vol. 24 No. 33, pp. 26006-26015.
- Mahmood, N., Wang, Z. and Hassan, S.T. (2019), "Renewable energy, economic growth, human capital, and CO₂ emission: an empirical analysis", *Environmental Science and Pollution Research*, Vol. 26 No. 20, pp. 20619-20630.
- Martinez-Zarzoso, I. and Maruotti, A. (2011), "The impact of urbanization on CO₂ emissions: evidence from developing countries", *Ecological Economics*, Vol. 70 No. 7, pp. 1344-1353.
- Menyah, K. and Wolde-Rufael, Y. (2010), "CO₂ emissions, nuclear energy, renewable energy and economic growth in the US", *Energy Policy*, Vol. 38 No. 6, pp. 2911-2915.
- Mousavi, B., Lopez, N.S.A., Biona, J.B.M., Chiu, A.S.F. and Blesl, M. (2017), "Driving forces of Iran's CO₂ emissions from energy consumption: an LMDI decomposition approach", *Applied Energy*, Vol. 206, pp. 804-814.
- Moutinho, V. and Robaina, M. (2016), "Is the share of renewable energy sources determining the CO₂ kWh and income relation in electricity generation?", *Renewable and Sustainable Energy Reviews*, Vol. 65, pp. 902-914.
- Naz, S., Sultan, R., Zaman, K., Aldakhil, A.M., Nassani, A.A. and Abro, M.M.Q. (2019), "Moderating and mediating role of renewable energy consumption, FDI inflows, and economic growth on carbon dioxide emissions: evidence from robust least square estimator", *Environmental Science and Pollution Research*, Vol. 26 No. 3, pp. 2806-2819.
- Pachauri, S. (2014), "Household electricity access a trivial contributor to CO₂ emissions growth in India", *Nature Climate Change*, Vol. 4 No. 12, pp. 1073-1076.
- Pata, U.K. (2018), "Renewable energy consumption, urbanization, financial development, income and CO₂ emissions in Turkey: testing EKC hypothesis with structural breaks", *Journal of Cleaner Production*, Vol. 187, pp. 770-779.
- Paweenawat, S.W. and Plyngam, S. (2017), "Does the causal relationship between renewable energy consumption, CO₂ emissions, and economic growth exist in Thailand? an ARDL approach", *Economics Bulletin*, Vol. 37 No. 2, pp. 697-711.
- Rahil, A., Gammon, R., Brown, N., Udde, J. and Mazhar, M.U. (2019), "Potential economic benefits of carbon dioxide (CO₂) reduction due to renewable energy and electrolytic hydrogen fuel deployment under current and long term forecasting of the social carbon cost (SCC)", *Energy Reports*, Vol. 5, pp. 602-618.
- Rehman, A., Rauf, A., Ahmad, M., Chandio, A.A. and Zhang, D. (2019), "The effect of carbon dioxide emission and the consumption of electrical energy, fossil fuel energy, and renewable energy, on economic performance: evidence from Pakistan", *Environmental Science and Pollution Research*, Vol. 26 No. 21, pp. 21760-21773.
- Shafiei, S. and Salim, R.A. (2014), "Non-renewable and renewable energy consumption and CO₂ emissions in OECD countries: a comparative analysis", *Energy Policy*, Vol. 66, pp. 547-556.

- Shahzad, U., Sarwar, S., Amin, W. and Qamaruz, Z. (2018), "The relationships among economic growth, renewable energy consumption, CO₂ emissions and agriculture production: empirical evidence for China and India", *Global and Local Economic Review*, Vol. 22 No. 1, pp. 41-68.
- Teixido, J., Verde, S.F. and Nicolli, F. (2019), "The impact of the EU emissions trading system on low-carbon technological change: the empirical evidence", *Ecological Economics*, Vol. 164, pp. 106347, doi: [10.1016/j.ecolecon.2019.06.002](https://doi.org/10.1016/j.ecolecon.2019.06.002).
- Tian, J., Andraded, C., Lumbrreras, J., Guan, D.B., Wang, F.Z. and Liao, H. (2018), "Integrating sustainability into city-level CO₂ accounting: social consumption pattern and income distribution", *Ecological Economics*, Vol. 153, pp. 1-16.
- Timilsina, G.R., Csordas, S. and Mevel, S. (2011), "When does a carbon tax on fossil fuels stimulate biofuels?", *Ecological Economics*, Vol. 70 No. 12, pp. 2400-2415.
- Toumi, S. and Toumi, H. (2019), "Asymmetric causality among renewable energy consumption, CO₂ emissions, and economic growth in KSA: evidence from a non-linear ARDL model", *Environmental Science and Pollution Research*, Vol. 26 No. 16, pp. 16145-16156.
- Ullah, I., Rehman, A., Khan, F.U., Shah, M.H. and Khan, F. (2019), "Nexus between trade, CO₂ emissions, renewable energy, and health expenditure in Pakistan", *International Journal of Health Planning and Management*, pp. 1-14, doi: [10.1002/hpm.2912](https://doi.org/10.1002/hpm.2912).
- Ummalla, M. and Samal, A. (2019), "The impact of natural gas and renewable energy consumption on CO₂ emissions and economic growth in two major emerging market economies", *Environmental Science and Pollution Research*, Vol. 26 No. 20, pp. 20893-20907.
- Yao, S., Zhang, S. and Zhang, X. (2019), "Renewable energy, carbon emission and economic growth: a revised environmental kuznets curve perspective", *Journal of Cleaner Production*, Vol. 235, pp. 1338-1352.
- Yazdi, S.K. and Shakouri, B. (2018), "The renewable energy, CO₂ emissions, and economic growth: a VAR model", *Energy Sources Part B-Economics Planning and Policy*, Vol. 13 No. 1, pp. 53-59.
- Zaghoudi, T. (2017), "Oil prices, renewable energy, CO₂ emissions and economic growth in OECD countries", *Economics Bulletin*, Vol. 37 No. 3, pp. 1844-1850.
- Zhang, Y.J. and Wang, W. (2019), "Do renewable energy consumption and service industry development contribute to CO₂ emissions reduction in BRICS countries?", *Environmental Science and Pollution Research*, Vol. 26 No. 31, pp. 31632-31643.
- Zoundi, Z. (2017), "CO₂ emissions, renewable energy and the environmental kuznets curve, a panel cointegration approach", *Renewable and Sustainable Energy Reviews*, Vol. 72, pp. 1067-1075.
- Zrelli, M.H. (2017), "Renewable energy, non-renewable energy, carbon dioxide emissions and economic growth in selected mediterranean countries", *Environmental Economics and Policy Studies*, Vol. 19 No. 4, pp. 691-709.

Further reading

- IEA (2018), "World CO₂ emissions from fuel combustion: database documentation", available at: <http://data.iea.org/>
- WB (2018), "World development indicators in databank of the world bank", available at: <http://databank.worldbank.org/data/source/world-development-indicators>

| | |
|--------------|---|
| HI countries | Israel; Oman; Saudi Arabia; Singapore; Bahrain; Brunei Darussalam; Croatia; Czech Republic; Estonia; Hungary; Kuwait; Latvia; Lithuania Poland; Qatar; Slovak Republic; Slovenia; United Arab Emirates |
| UM countries | Iran, Islamic Rep.; Iraq; Malaysia; Sri Lanka; Thailand; Turkey; China; Albania; Armenia; Azerbaijan; Belarus; Bosnia and Herzegovina; Bulgaria Georgia; Jordan; Kazakhstan; Lebanon; North Macedonia; Romania; Russian Federation |
| LM countries | Egypt, Arab Rep.; India; Indonesia; Myanmar; Pakistan; Philippines; Bangladesh; Cambodia; Kyrgyz Republic; Moldova; Mongolia; Ukraine |
| LO countries | Uzbekistan; Vietnam Nepal; Tajikistan; Yemen, Rep |

Table A1.
Specific countries or
areas grouped by
their income levels
for the BRI region

About the authors

Junsong Jia received the bachelor’s and master’s degrees from Nanchang University, Jiangxi, China, in 2003 and 2006, respectively, and the PhD degree from the Chinese Academy of Sciences, Beijing, China, in 2009. He worked as a post-doctor staff with the Chinese Academy of Sciences, in 2011. Since 2011, he has been with the Key Laboratory of Poyang Lake Wetland and Watershed Research, Ministry of Education, School of Geography and Environment, Jiangxi Normal University, Nanchang, China, where he is currently a professor. His research interests include climate change, low-carbon economics and sustainable development. Junsong Jia is the corresponding author and can be contacted at: jjiaaniu@126.com

Yueyue Rong received the bachelor’s degree from Jiangxi Normal University, Jiangxi, China, in 2018. She is currently a postgraduate in the Key Laboratory of Poyang Lake Wetland and Watershed Research, Ministry of Education, School of Geography and Environment, Jiangxi Normal University, Nanchang, China.

Chundi Chen worked as a Research Professor in the College of Architecture and Urban Planning, Tongji University. She earned a PhD degree in landscape planning and management at Lincoln University, New Zealand. She is also the corresponding author and can be contacted at: chundichen@tongji.edu.cn.

Dongming Xie worked as a Professor in Jiangxi Science and Technology Normal University, Nanchang, Jiangxi, 330013, China.

Yong Yang received a bachelor’s degree from Jiangxi Normal University, Jiangxi, China, in 2017. He is currently a postgraduate in the Key Laboratory of Poyang Lake Wetland and Watershed Research, Ministry of Education, School of Geography and Environment, Jiangxi Normal University, Nanchang, China.